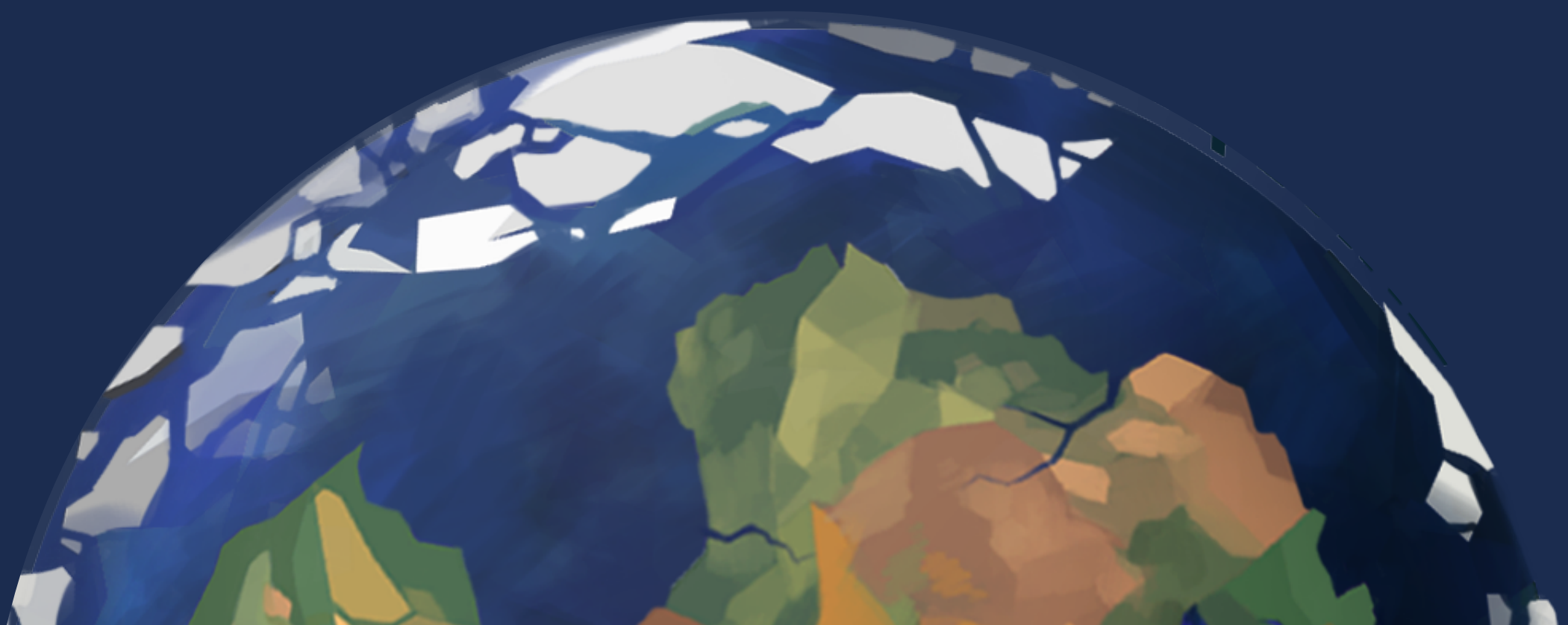
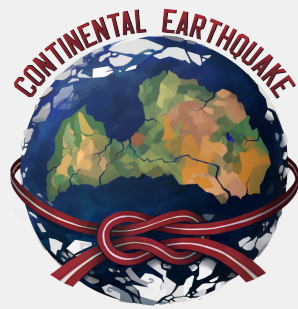


Are you ready for the CONTINENTAL EARTHQUAKE, which will shake the whole world this Summer? The epicentre will be closer than you might think - right at the international rovers' and rangers' jamboree in the heart of Latvia!

July 2018 is shaking the world! A powerful earthquake has disrupted the current world order. The continents clashed and created a new one named after Latvia. How will the new society develop and what will be the new world order? How will the tribes of primitive continents inhabit the new common world? What challenges do we expect to come? What events will happen in Latvia, inhabited by the tribes of Europe, Asia, Africa, South America, North America, Australia and Antarctica? Adventures, challenges, new friends, knowledge, learning about other cultures and much more will be experienced during the Continental Earthquake.

The mission of the Continental Earthquake is to create an unforgettable outdoors adventure camp that will inspire youngsters - pioneering and existing rovers and rangers to be active and inquisitive citizens, to expand their comfort zone. To inspire Latvian society and people abroad dare to set higher goals and reach them!





PLACE

Latvia, Riga, Lucavsala

TIME

23.07.2018 - 29.07.2018

HOST

“Latvian Scout and Guide Central Organization”. You can get to know more about Latvian scouts and guides here: www.skauti.lv

TEAM

Camp Chief – Dāvis Kiršfelds

Commandant – Rolands Dūdiņš

Tech Guru – Mārcis Akmeņkalns

Programme Guru – Atis Keņģis

Info Guru – Elīna Dūdiņa

Prosperity Guru - Iveta Ēlerte

Finance Guru - Edgars Indriksons

Sponsorship Guru - Sanita Salgus

LIVING CONDITIONS

The camp takes place fully outdoors. The camp will be divided in subcamps according to pre-arranged “continents”. Camp will be held in two languages: English and Latvian.

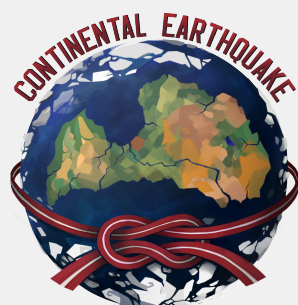
All participants/groups need to take care of their own personal equipment, which includes providing your own sleeping equipment – tents, matrices, sleeping bags, etc.

PARTICIPANTS

Members of scout and guide organizations (MO/ NSO’s of WOSM and WAGGGS) all over the world, aged 16 and more years.

REGISTRATION

If you are a scout/guide and want to take part in the camp, please fill in this registration form: <http://ejuz.lv/continentalearthquake>



PARTICIPATION FEE

For international participants, the participation fee is determined by the WOSM event participation fee categories.

Registration is accounted by submitting electronic application and payment in amount of at least 20% of the participation fee.

Country Category (according to WOSM)	Registered until 15.06.2017
A	€78
B	€104
C	€130
D	€156
E	€182

Participation fee **includes**: camp organization expenses, catering, program materials, emblems for the uniforms, camp info guides, and others.

Participation fee **does not include**: travelling expenses to and from camp.

Participation fee must be transferred to the following bank account:

Organization: Biedriba "Latvijas Skautu un gaidu centrālā organizācija"

Registration number: 40008000437

IBAN: LV46NDEA0000082056292 (Luminor Bank)

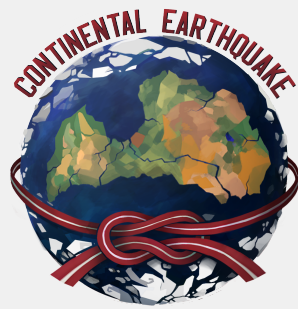
SWIFT: NDEA LV2X

The following information must be provided in the transfer details:

"Continental Earthquake", Name Surname [of the participant], Country, NSO or MO

Example: Continental Earthquake, Emma Smith, Latvia, LSGCO

In case of a non-participation, the first payment of the participation fee (20%) won't be repaid. However, the payment can be transferred to another person going instead.



CONTACT INFORMATION

For any additional questions please contact our Camp Chief, Dāvis Kiršfelds via davis.kirsfelds@gmail.com, +371 26229302

SEE YOU IN CAMP!



Why come to Latvia?

Latvia is a gem! We know it, you know it, but still, we've gathered few of the many reasons to come here.

IT'S A WONDERLAND FOR EXPLORERS!

Latvia has 12,000 rivers and 3,000 small lakes. Around 54 per cent of Latvia is forest. That's half (HALF!) of Latvia's natural ecosystems that have gone largely untouched, making it one of Europe's greenest countries. Mystical pine woods and romantic springs, it's all here. And a large part, 10 per cent are beautiful bogs (so pack your boots) that are especially fantastic in the morning. We can only guarantee that the nature scene here is perfect for exploring.

Binoculars might be useful too - Latvia is home to black storks, lesser spotted eagles, otters, beaver, lynx, and wolves, and great concentrations of deer, wild boar, elk and red fox.

WE HAVE SANDY BEACHES

It's a decent bet for an offbeat beach holiday, if you don't mind the chilly water, with 330 miles of sandy beaches. Just west of Riga lies Jurmala, summer resort city. Temperatures can top 20C in high summer, so you might even need sun cream.

WE LOOK AFTER OUR NATURE!

Around 20 per cent of Latvia is protected. There are four national parks, 42 nature parks, 260 nature reserves, 355 nature monuments, seven protected marine areas, 24 micro reserves and a biosphere reserve.

WE HAVE AN AWESOME WATERFALL

Note that Venta Rapid (Latvian: Ventas rumba) is a waterfall on the Venta River in Kuldīga, Latvia. It is the widest waterfall in Europe with 249 metres and up to 270 metres during spring floods. The height of the waterfall changes depending on the water level in the river.

WE HAVE A CAPITAL WORTH VISITING

Riga, capital of Latvia, is sometimes described as the Paris of the North. It was named the European Capital of Culture for 2014. The city boasts a UNESCO-listed old town and prized collection of Art Nouveau architecture. The city also has more than 4,000 standing wooden buildings; no other European city has so much wood left over from history.

AND THAT'S JUST FOR INTRO

Irbene Radio Astronomy Center, the world's eighth largest radio telescope. Gutmans Cave, the largest grotto in the Baltics, features inscriptions that date to the 17th century. Rundale Palace, a piece of art from the famous architect Rastrelli, looks like straight from a fairytale. Kemeris bog, a mystical 8,000-year-old swamp, is one of the most Instagrammable places ever. These are only a few of the pretty cool sightsees you can grasp in Latvia. Caution: google "reasons to visit Latvia" only if you know you're actually coming, otherwise it will be hard to resist! :)



How to get to Lucavsala?

We must agree, Riga is rather remote from any busy European metropolitan center so we have prepared a little guide to help you find your way to the Jamboree. Check the cool map and continue reading!

If you are coming by:

PLANE

There are 4 international airports in the Baltic region: Riga (LV), Tallinn (EE), Vilnius (LT), and Kaunas (LT). If you find yourself at the Riga International Airport, take bus 22 to the city center (bus stop "Centrālirgus") and then hop on bus 40 or trolleybus 19 which will take you to "Lucavsala" the location of the campsite.

BUS

If you end up in any other of the Baltic airports, there is a convenient inter-city bus schedule connecting the city centers. You can also travel to Riga by bus from Warsaw, Frankfurt, Berlin, and Minsk. Once you are in Riga International Coach Terminal, take a walk through the Central Market and then hop on bus 40 or trolleybus 19 which will take you to “Lucavsala” the location of the campsite.

TRAIN

To come by train from Europe or other Baltic cities, you will have to wait for a couple of years while Rail Baltica opens. Meanwhile, the only option is to take 2 trains on a route Tallinn - Valga - Riga.

FERRY

Riga is nearby the sea, so you can come across the sea from Stockholm or from Helsinki to Tallinn and then take a bus to Riga. From the Riga Sea Port, take tram 7 nearby to “Centrālirgus” and then approach the other bus stop where you can hop on bus 40 or trolleybus 19 which will take you to “Lucavsala” the location of the campsite.

HITCHHIKING

By the way, highly recommended! The Baltic States are one of the most suitable places for hitchhiking as there are no huge highways and the locals are mostly friendly and helpful. Many Latvians are hitchhikers themselves. A road from Poland should not take you more than a day.

IMPORTANT!

Please, see whether you need a VISA. Any information concerning obtaining visas can be found here: <http://www.mfa.gov.lv/en/consular-information/entry-into-schengen>